

Husthwaite Newsletter

June 2008 Issue 35



New Beginnings

County Councillor “Pop” Featherstone helps the Nixon family to plant one of the 31 new trees in the new village recreation area.



Hustwaite Newsletter is jointly funded by the Parish Council and the Village Hall Committee. It's free, delivered to each house in the village and available on line.

EDITOR: Jan Coulthard

Please send contributions for the next edition by July 18th to me via email (jancoulthard@hotmail.co.uk) or by post to Aletheia House, High Street, Hustwaite YO61 4PX or Telephone 01347 868130. Comments and suggestions are welcome.

NEW!..... Get the Newsletter online

If you know anyone who would like to receive the Newsletter online (in pdf format only) let us know their e-mail address and we will add them to the mailing list (which now includes people in places as far as China, Canada and Italy!).

Obituary

Ralph Leeper 1919 to 2008

Ralph and Diana Leeper retired to Hustwaite in 1981 when they moved to White Gates at the top end of The Nookin. He was commissioned into the Army during World War Two and qualified later as a Chartered Surveyor, continuing to work for the Army as a civilian. Ralph and Diana met in Germany where they were both working for the armed services and, after a further spell in Edinburgh, they settled on the quiet rural tranquility of Hustwaite for retirement. Ralph became a familiar figure in the village walking Ben, his black Labrador. At one time, Ralph was a member of the Hustwaite Show and helped with the organisation. Later, he represented the village at the Public Enquiry into the route of the National Grid power line which at one time threatened to run parallel to the existing power line. More recently and despite failing health, he followed very closely the development of the Hustwaite village plan. Ralph was a considerate and caring member of the local community and a gentleman to the end. We shall miss his friendly conversations and cheerful anecdotes. But he will be missed most of all by Diana to whom we offer our sincere condolences.

Gerald Crane

The Master Thatcher

By Jan Coulthard

I'm sure many of you were as surprised as I was to see a trailer filled with thatching reeds in the village lately, particularly as there seem to be few thatched houses in this area.

My enquiries led to Christopher Smart, a master thatcher, who has come to live in Husthwaite with his Yorkshire - born wife and five children. In fact Christopher works mostly in the south of England, particularly the Home Counties, where more properties are thatched, though he has thatched roofs in Harome and Asenby.

In the past, most houses even in the north would have been thatched, and Christopher says that the advent of the railways allowed rich people to have expensive and fashionable tiles to be transported to their towns and villages, while the poor continued to use thatch. Nowadays the reverse is true, as



wealthier people often opt for a thatched roof, which adds insulation and charm to their houses. Christopher trained in Winchester on a 5 year apprenticeship, inspired by a visit to the Weald and Downland Museum, where he saw a thatcher at work. Now he is an experienced craftsman, with many completed projects. He has to use imported reeds, as these are rarely grown here now, whereas his straw thatching material can be sourced in Devon. The tools used are specialist and hand-made, with names like a leggatt (a wooden bat for dressing thatch

ends) and a sparhook (a kind of curved billhook for trimming hazel pegs). Christopher repairs old roofs, often stripping them down several layers and finding buried objects on the way, such as a mummified cat, a gold watch, false teeth, remnants of long-ago workers' lunches and bottles with messages in, left on purpose in the past for future thatchers to discover. His new project, however, is to promote the concept of thatching on new-build property, and to convince property developers that this sound ecological insulation also adds value and attractiveness to houses.

His business contact email is smarththatcher@hotmail.co.uk

Christopher and family have tried living in the south, nearer to his work, but they prefer living in North Yorkshire despite the travelling. With their children in the local school, they intend to settle here, and I am sure will be made welcome by the community as newcomers here always are.

A Busy Month Ahead for the Village Hall

Refurbishing the Billiard Room

Two big pieces of work start at the hall in early June. The first is an overhaul of the Billiard Room. This begins with repair of the floor. We put this job out to public tender and selected Steve Cariss from Coxwold. The construction of the concrete extension in the 1980s reduced ventilation under the floor, causing decay. The wall plate, the joists and boards, the full length and half the width of the room will be stripped out and replaced with modern materials. We have sounded village opinion on the future of the billiard table. It has a distinguished history, and no one is happy to see it go. It does, however, restrict the room to one purpose, which has become redundant. If you know of an interested buyer, let us know quickly please. We are researching ways of getting best value.

The newly designed room will upgrade our storage space and will open the possibility of new uses. The first of these will be the return this autumn of the Youth Group.

The second set of workmen will be attending to the trees behind the hall.

Three specialists had the same opinion. The giant sycamore which dominates the hall's roof is sound, but some weight will be taken out of its branches. The adjacent holly trees are rotten and have to go.

There are interesting developments in the kitchen. Generous supporters have donated a new oven and a new double-drainer sink. We'll get these fitted as soon as we can .

Insulating the roof and walls

Meanwhile, the committee is ready to move the hall's refurbishment plan to its next big phase. The eco-surveyor, Edward Harland of York, stressed that we must bring the insulation up to modern specifications. We are going to take a second opinion from a structural surveyor on the way to do this job. It will involve having the roof line lifted and the new cavity filled with insulating material. Then we will go out to tender, with interested contractors quoting to exact specifications.

Open Mike Evening

In May we held our inaugural Open Mike Evening. What a treat it was to be backed by so many village people and visitors! Alun Nixon and Phil Grainger were the backbone of the occasion. Piano, drums, didgeridoo, accordion and singing; they did it all! We had fabulous performances of a range of pop, traditional, self-written and folk music. Much of it came from the young people,

who were also well represented in the audience. Contributors included Brian and Callum Watt, Kerry Barker, Lucy Collins and Mark Gambles. The occasion attracted some remarkable visiting performers. Tony and Linda Lacey from Wass told a Gaelic story, accompanied by harp and whistle. Susan Neale, a marvellous soprano from Easingwold, sang traditional jazz and folk numbers. David Swann is a lovely folk singer from Malton, with a gift for hilarious audience participation.

Thanks to Mike Wells for his professional audio engineering. Thanks to our receptive audience. The occasion raised £203 for Village Hall funds. By popular request we are doing another evening on Saturday 28th June, first number at 7.30pm. Tickets £3 on the door. ***Please note that this is a change of date***



Phil Grainger, Brian Watt, Alun Nixon and Mark Gambles at the Open Mike Evening

Treasure Hunt

This year's Treasure Hunt, on 29th June will start and end at the hall and a really good route has been worked out. The barbecue will be on the amenity

area, closed to cars for the afternoon. The inevitable tiebreaker will be a free for all in French cricket. Tickets £5 to include the cost of the barbecue. To help our catering arrangements, please ring Vikki Nixon on 868740, before 22 June.

Summer Fayre

In order to by-pass competition from the Galtres Centre, we have decided to turn our Fashion Show into a Summer Fayre. On 19th July at 6.30pm there will be a range of stalls in the hall, including fashion wear by Ei-Ei-O and jewellery and accessories by Annabelle Show Creations. Admission free. Bar, refreshments and tombola. For details contact Lynn Collins on 868655.

Karate Classes

Learn Karate in the Village Hall with Sensei Grahame, Saturdays 1.00-2.30pm from 31st May. Self Defence for Ladies, alternate Wednesdays 7.00-8.30pm, starting 4th June. Grahame says there's no need to book in advance. Your first lesson will be free.

Parish Council Rep

We are delighted that after the Parish Council's AGM, Ruth Woodhead continues as their representative on the Village Hall Committee.

Rural Click

Why not visit the Village Hall's web site, developing now as part of the North Yorkshire Halls portal. Go www.ruralclick.com. Click North Yorkshire Halls Project. Under Portal, scroll down and enter Hushwaite in the Search panel. This is a pilot project and we are one of a small number of halls developing the idea, so don't expect perfection just yet.

Richard Wood

Easingwold Players

OLIVER

Advance Dates

These meetings will be held in the Galtres Centre

Mon 16th June	6.30-7.30	Children & parents	General introduction
Wed 18th June	6.30-7.30	Children & parents	General introduction
Sat 21st June	2.00-4.30	Children's workshop	
Mon 23rd June	7.00-9.00	Adults	
Thurs 26th June	7.00-9.00	Ladies	
Wed 2nd July	7.00-9.00	Men	

A New Demand and Response Mini-Bus Service

Tuesdays and Fridays in the Easingwold area

Hello, I'm Gerry Stokeld and I work for Harrogate District Community Transport, who operate the 'Little Red Bus'.

We are an independent voluntary organisation tackling isolation faced by people living in rural areas. If you have difficulty in using public transport you can use our service for trips such as shopping, socialising and medical appointments.

Our vehicles are specially adapted, with low entrance steps, lifts and ramps which make them more easily accessible.

I carry a full PCV driving licence and am MIDAS trained, with plenty of experience in customer care and disability awareness. With the health and safety of all our passengers paramount, our vehicles are subject to spot checks, and weekly monitoring is in place to observe the drivers' interaction with passengers.

My brief is to establish a service in the Easingwold area on Tuesdays and Fridays. All potential customers would need to complete a straightforward membership application form and pay £6 as an annual subscription. This then entitles the member to book the bus at very reasonable rates to undertake their chosen journey.

I will collect you from your home and take you to your destination at the appointed time and do the same for the return trip. If you have mobility problems I will make sure you, and all your shopping bags, are safely back into your home before I leave. I have even been known to put the kettle on!

We would initially operate the scheme to provide travel between villages, to and from Easingwold and Thirsk. We can also connect passengers with other regular service buses, and this enables them to travel further afield.



If you would like further details or a membership application form, please don't hesitate to contact our main office telephone number: 01423 526655 or you can contact me on 07762 750950. We will do everything possible to answer your questions.

I hope that you will find the scheme of interest and look forward to being able to provide you with a safe, reliable and quality transport service.

Gerry Stokeld

Kendrew Green

Villagers with an interest in botany and wildlife may have noticed the interesting range of wild flowers on the small triangle known as Kendrew Green, where the road from Easingwold comes into the village.



Matthew Millington, North Yorkshire County Council's Bio-Diversity Officer, says that there are 26 known different species of wild flowers there, including Bluebells, Primroses, Cowslips, Ox-eye daisies, Crosswort, Lady's Smock, Eye-bright, Violets, Lords and Ladies, Pignut and Wild Strawberries. He says The Green is a valuable wildflower meadow, very rare in a village, as nationally 97% of these meadowlands have been destroyed by intensive farming and amenity use in the last 50 years. Yet we have one on our own doorstep!

Luckily the grasses growing among the flowers are not tall enough species to drown out the flowers nor cause a traffic hazard. Butterflies, bees and other insects love the blooms in this type of habitat, which is rich in nectar for them. These in turn will attract birds onto The Green, adding to the richness in wildlife.

There is always going to be something of a clash between conservation of these valuable habitats and amenity value (like using the seating area and the desire of some to keep the Green very tidy looking). Matthew says that if the grass and flowers were cut between August and late March, then allowed to grow between April and July, with amenity paths to the seating area, then the seeds would set well enough to flourish the next year. The grass cuttings in August would then be removed, in order not to enrich the land, which would reduce the number of wildflowers. In the spring and summer months we would then have a unique display, to delight walkers and villagers, and to be a useful educational resource for the school.



We are lucky to have custody of such a unique meadowland, and I think we should treasure and conserve it as best we can.

Jan Coulthard

The Balmoral

Low Street
Husthwaite
01347 868007

family run traditional pub

specialising in

Ladies that Lunch

Children that Lunch

Early Bird for families

Traditional Sunday lunch

All families welcome

Parish Council News
PARISH PLAN - UPDATE (6)
LOOKING BACK - LOOKING AHEAD

At this sixth special meeting of the Parish Council, held on Tuesday 29th April 2008, particular attention was given to reviewing progress in addressing priorities in the Parish Plan, launched just over a year ago. A brief summary of evaluations is as follows:

8 PRIORITY ISSUES

Highway/Pavement Maintenance

Badly damaged kerbstones have been replaced by NYCC. Whilst ‘top dressing’ of pavements in some parts of the village has smartened their appearance, a request has been made for the remainder to be done. In the main, pot-holes have been filled in as identified.

Passing Places on Narrow Roads

Following contact with neighbouring parishes/villages, a map, identifying possible passing places on the Carlton Road and Malton Street, has been submitted to Highways division at NYCC.

Public Transport Improvements

The bus service to Thirsk has been reinstated. Although agreement has been reached with NYCC about the number and positioning of bus stop signs, there is concern about undue delay in provision.

Recreation Field Development

Agreement has been reached on a sketch plan layout. The first stage in developing the woodland/wildlife area has now been completed. It is most encouraging to report that almost 30 villagers have been involved in the various tasks necessary to plant a variety of 31 trees. Quotations for play equipment and play areas have been received. Some grant applications have been submitted and others are in the course of preparation. A draft Management Constitution has been amended, taking account of advice from Hambleton District Council.

School Parking

There appears to have been improvement due to some parents using The Balmoral car park, kindly offered by James and Lynn. New procedures for leaving school have speeded up the departure of buses. Some parents could improve safety by entering /leaving cars via the

footpath rather than the road.

Village Design Statement

A working group has now been established and progress is envisaged over the summer months.

Village Hall

Re-surfacing of the car park, together with new perimeter walls, steps, hand rails, door, some external painting and the renovated sign have much improved the external appearance. A very successful pantomime was well supported. The Village Hall Committee has planned an interesting and varied programme of future events. A small joint working party (VH & PC) has met to consider future provision.

Conservation of Rural Setting

The PC response to planning applications is mindful of this issue. Development of the woodland/wildlife area is seen as being a positive step.

OTHER ISSUES ADDRESSED

Welcome to Husthwaite (information pack)

This has now been completed and distributed to every household. There has been some encouraging feedback regarding contents and the impressive cover design. The PC is planning to enter this pack in the Village Ventures 2008 Competition organised by Yorkshire Rural Community Council.

Website

This seems to be at a stage where some updating would be beneficial.

Consultation on Planning Applications

The PC makes conscious efforts to keep everyone informed, especially immediate neighbours and others most likely to be affected. All parishioners are positively encouraged to attend PC meetings.

Communications

The PC makes extensive use of the Newsletter to convey information and reports. The notice board, near to the village green, is kept up-to-date with relevant items. Press reports, through Roy Leverton, also contribute to publicity.

OVERALL, THE PARISH COUNCIL FEELS THAT THERE HAS BEEN VERY GOOD PROGRESS DURING THE PAST YEAR.

With regard to other issues not yet tackled, they will be dealt with in due course, as time allows.

PLANNING AHEAD - THE RECREATION AREA

Looking ahead, it is envisaged that this will continue to make high demands on PC time. We have now reached a stage where it is necessary to seek additional help from across the community. It is proposed, therefore, to establish 3 focus/interest groups to share in the planning, decision-making and development of the following:

WOODLAND/WILDLIFE AREA

MULTI-USE GAMES AREA (MUGA)

YOUNG CHILDREN'S PLAY AREA (aged 3-8 years)

A target size for each of these groups is envisaged as being 2-4 people. Everyone is strongly urged to seriously consider becoming involved in these initiatives which will shape the quality of leisure and recreation provision in the village for many years to come. The PC cannot undertake the tasks involved on its own. If anyone would like to discuss what such commitment is like to entail, please contact one of the following: Carol Fenwick (868479), Luis Ponte (868551) or Peter Davison (868449).

The Army Becomes Involved

Resulting from contacts through Cllr. Percy Featherstone, we have been offered some help from around 15 soldiers from the Royal Dragoon Guards regiment. They are currently based in Germany but will be returning to Catterick shortly, when they plan to establish links with a few local communities to assist with projects requiring muscle and free labour. At this stage, it looks as though they will be arriving in Husthwaite on Tuesday 1st July to assist with the production of a drainage ditch and some general tidy-up within the Recreation Area. The Parish Council is confident that the soldiers will be warmly welcomed and their efforts valued - please feel free to make a brief visit to meet them and discuss their work.

Next Meeting

The seventh of these special meetings will be held in the Village Hall at the earlier time of 7.00 p.m. on Tuesday 17th June 2008.

All parishioners are warmly invited to attend, especially anyone wishing to become involved in developing proposals for the Recreation Area.

Peter Davison

'Welcome to Husthwaite' pack.

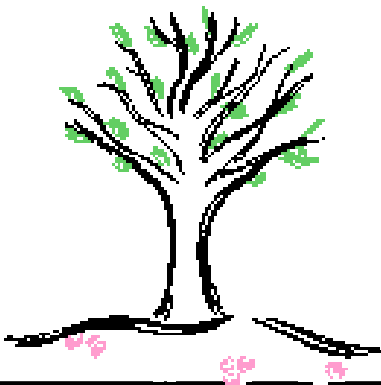
By now, you will all have received your pack. We hope you are finding it useful. Please note that in the section concerning CCASS one of the



contact people is Jen Bettsworth(not Jan, sorry Jen!) The yellow leaflet referred to was distributed to residents in the Village Newsletter earlier, but if you do not have one it can be obtained from Ann Davies (868506), Jen Bettsworth (868178) or the Village Shop.

It is inevitable that this pack will need updating. An early change concerns Dr Sen who retires at the end of May. Please amend your pack to take account of this . Linda Davison, Juliet McDougall and Carol Fenwick (pictured left)

Pilgrim St, now The Nookin , in 1904, with Cote House (formerly the Post Office) on the right and, on the green, a small cottage.



Without You

Without you I'm like
I'm like a forest without trees
I'm like a sea without fish
Or a pencil without lead.

Without you I'm like
I'm like tap without water
I'm like a table without chairs
Or a cat without a mouse.

Without you I'm like
I'm like a knife without a fork
I'm like a sunset without the sun
Or a heart without a beat.

Without you I'm like
A sky without clouds
I'm like a tree without its branches
Or a banana without its peelings.

By Connor Harkness (Year 4)

Husthwaite's New Primary Head

Mrs Rebecca Bainbridge is settling in well as the new headteacher at the primary school, helped by the welcome she has received from the staff and children.

Coming from a school which served the Armed Services at Dishforth Airfield, she loves the sense of village community, history and stability here, where the children stay through from nursery to class 6. In her previous school the children moved on more often, usually after a couple of years, as their parents transferred to other places. The purposeful, cheerful working atmosphere in the school is evident to the visitor, as is the courtesy and respect of the children for adults. Class sizes are enviably low too. What is so nice, too, is that the children have a real childhood here in the country, without the false sophistication that some city children have forced on them too early.

Mrs Bainbridge says that the challenges facing her school are mainly to do with the curriculum - how to fit in all the recent initiatives with the core subjects. The answer is, she says, to be creative, and much of the children's work is topic related rather than subject based, so that new ideas can be included in an interesting and relevant way. Also the whole school gets involved in Curriculum Days, when a major subject like maths is explored by all-age family groups in such a creative way that the children don't realise how much they are learning!

Parental involvement is very important, she says, both through active help in class with reading, crafts and gardening, but also via the questionnaire sent to parents to gather information, ideas and any concerns they may have. Children have homework, which is not compulsory though parents are encouraged to work with their children on activities at home to consolidate their learning in school.

SATS tests can cause anxiety for children, so the school takes a relaxed matter-of-fact approach to avoid stress, and the results are explained to parents. There are good transfer procedures to secondary school too, so that the children are introduced to their new schools through events over a long period.

New plans, says Mrs Bainbridge, include extending nursery provision with more hours and greater flexibility, and extending the lunchtime



Rebecca Bainbridge; new Head-teacher at Hushwaite School

club. More links with the community are important too, so there could be some developments there. Already a computer course for adults is planned from June onwards.

With Mrs Bainbridge's evident enthusiasm and love for the children, and the support of an excellent staff, this school has a rosy future.

Jan Coulthard

Dates for your diary

Scottish Dancing Fri 27th June and Fri 18th July 8 pm- 10 pm

Open Mike Evening Village Hall Sat 28th June 7.30 pm

Treasure Hunt Village Hall Sun 29th June 1.30 pm

Summer Fayre Village Hall Sat 19th July 6.30 pm